

# LINEAS PANCHITA G DE NAVEGACION S.A



COMPANY OVERVIEW  
OCTOBER, 2023

# COMPANY HISTORY

- In the mid 70's, LINEAS PANCHITA G began its journey around the South American rivers with a small cargo boat with the load capacity of only 5 trucks. Today, the company's comboys move around 40,000 tons of goods per trip.
- By 2023, our fleet consists of 8 pusher ships, over 90 barges (bulk and oil and cargo).
- A Stowage and logistic department also play a vital role within the company, helping the efficient distribution of goods.



# COMPANY HISTORY

- Besides being the leader shipping company in the local market, a variety working fields helped develop this bussiness hub: a shipyard, a logistic company for road transportation, the production and distribution of oilseeds, a 30.000 hectares with 12.000 head of cattle for export, featuring genetics from the finest breeds that meet the export requirements for international markets.



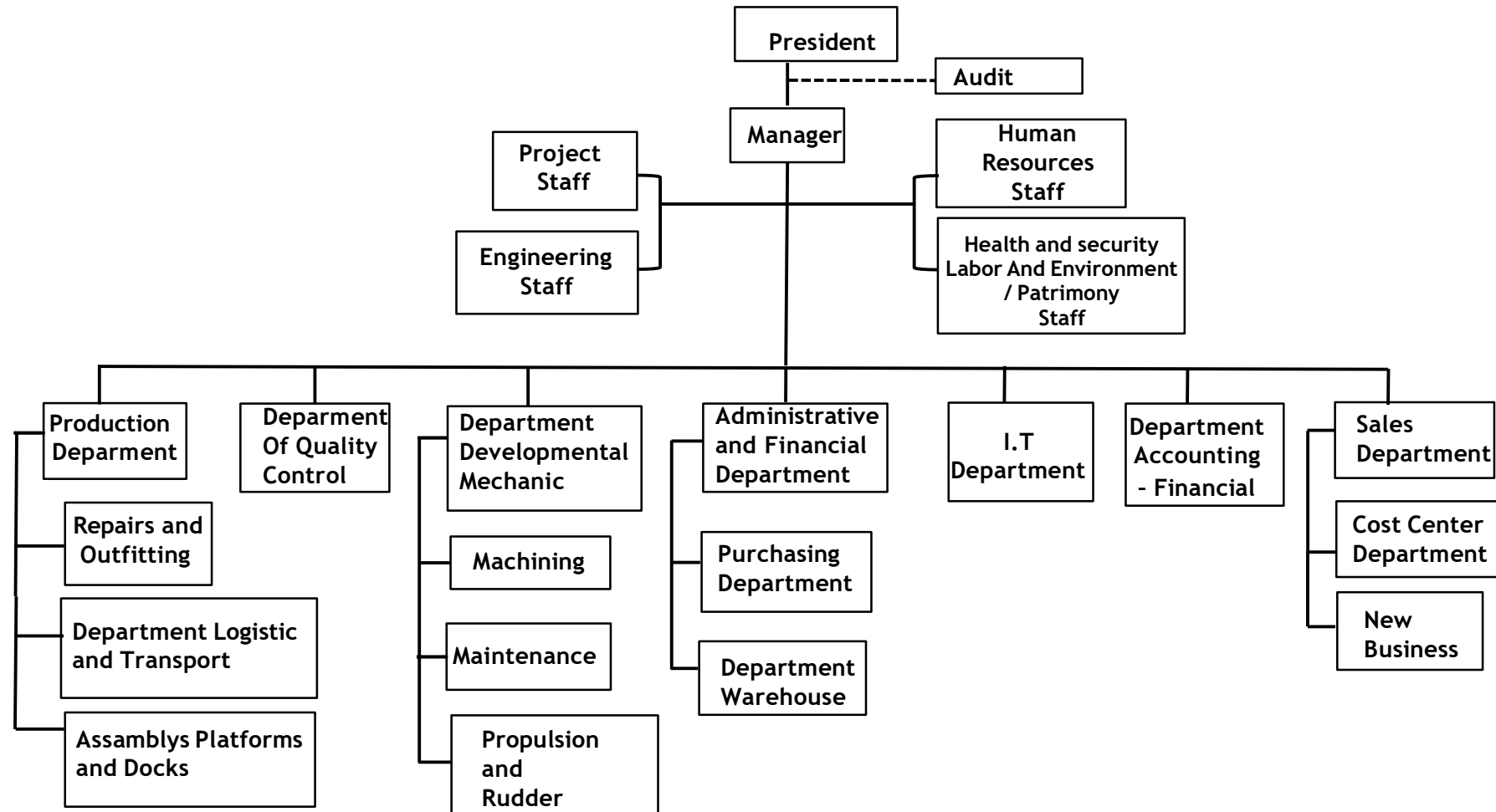


# SHIPYARD HISTORY

- Founded in 1980 by the Gonzalez Arce family, the shipyard AGUAPE S.A. started as a hub for small ship's repairs, later the company acquired its first barges, starting in the business of import/export.
- During the 90s the shipyard increased its work force, facilitating the construction of more barges and even the purchase and transformation of pushers, adding them to its evolving fleet.



# ORGANIZATIONAL STRUCTURE



# MISSION STATEMENT

- Contribute with innovative engineering solutions to the design, construction and efficient repair of all types of vessels that navigate the Parana- Paraguay waterway, always committed to safety and the environment.



# VISION STATEMENT

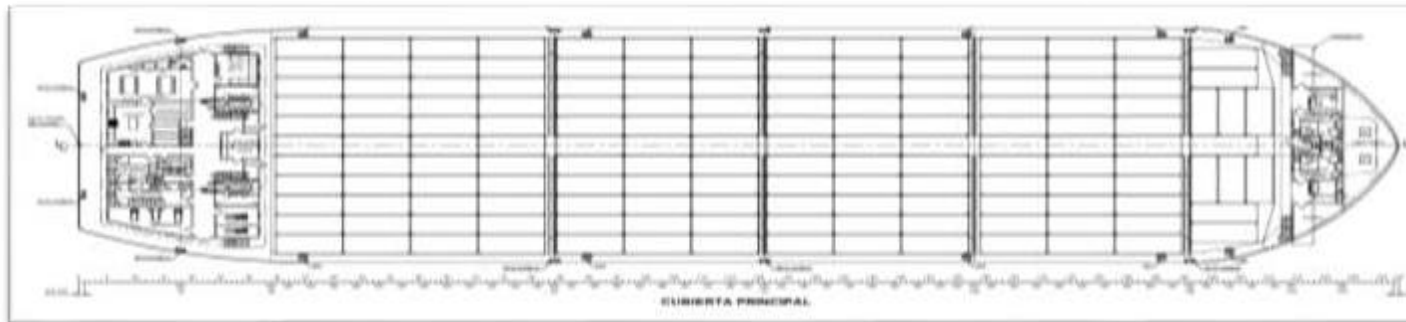
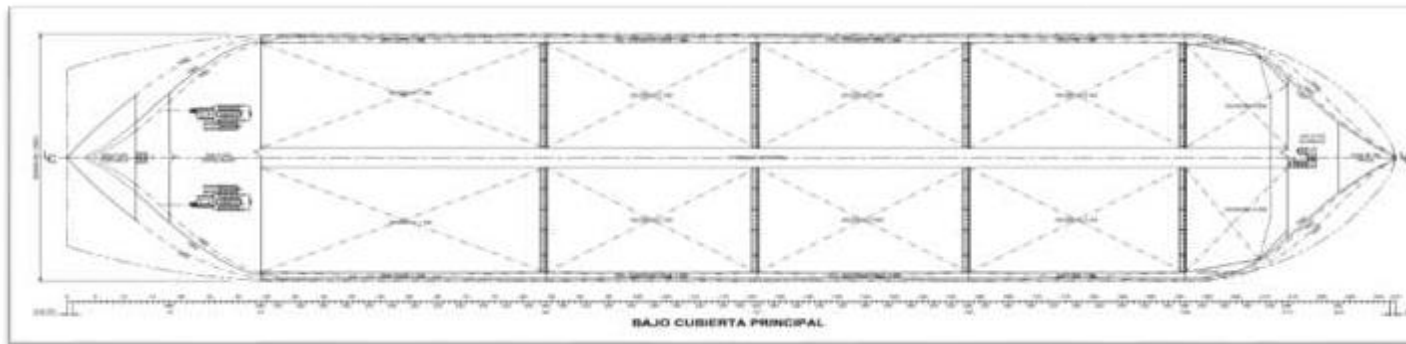
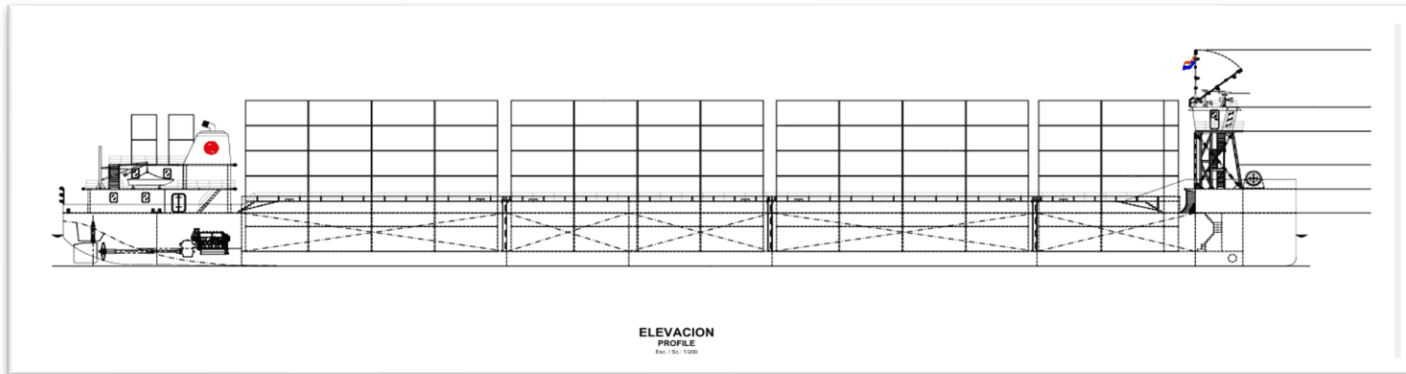
- To be a leading shipyard due to the integral quality of the work carried out, due to its team, technology, efficiency and competitiveness, putting quality management and human development systems into practice.







# ONGOING PROYECTO: B/M DON TOYO



## CONTAINER SHIP:

LO= 120,0 m.

B= 30,0 m.

D= 5,5 m.

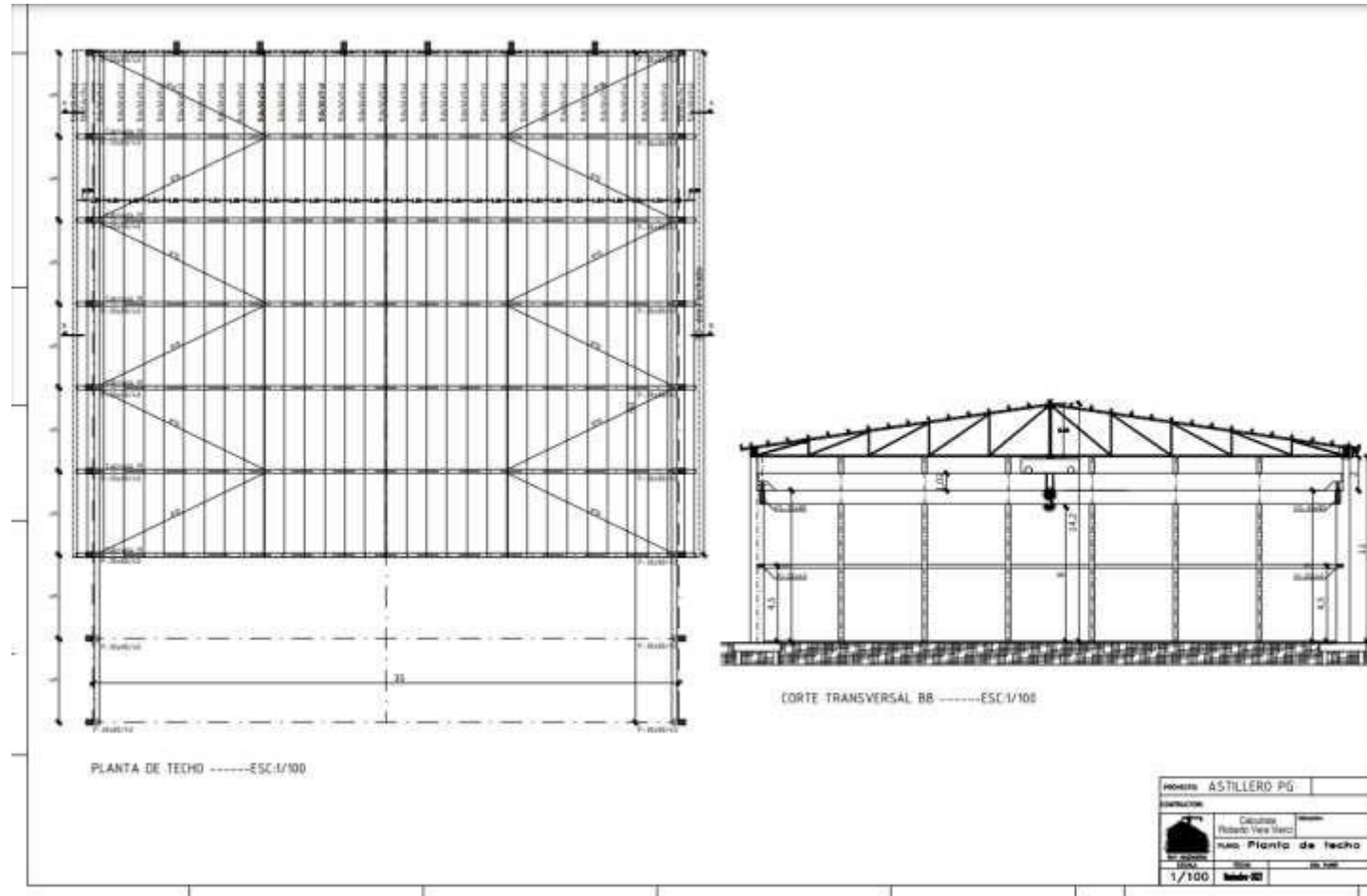
Molded Draft= 3,2 m.

# IN PROGRESS: B/M DON TOYO

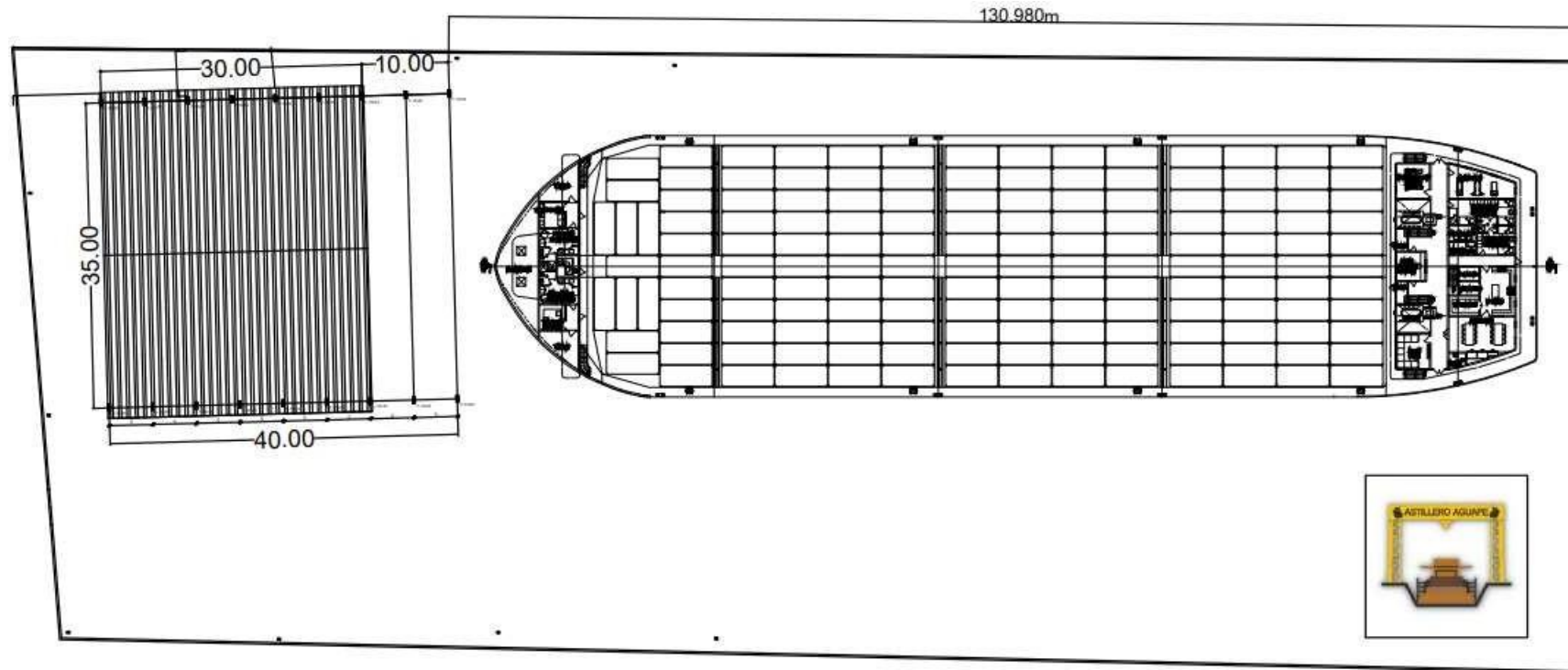


- Once completed, DON TOYO will become the largest container ship to ever cross the Parana-Paraguay waterway, marking a milestone for the shipbuilding local history.

# SHIPYARD No 3



# SHIPYARD No 3



RIVER PY



# LATEST CONSTRUCTIONS

\*R/E TIO JAN (2021)

- Lo= 31.90m.
- B= 12.00m.
- D= 2.50 m.

Pusher able to transport 12 barges/ trip, using three Caterpillar engines (1500 HP, 1800rpm each).  
Certified by the Italian class RINA



# LATEST CONSTRUCTIONS

\*R/E DON PACHECO (2022)

- Lo= 35.20m.
- B= 14.00m.
- D= 2.80 m.

Pusher able to transport 12 barges/ trip, using three Caterpillar engines (2000HP, 1800rpm each). Certified by the Italian class RINA.

